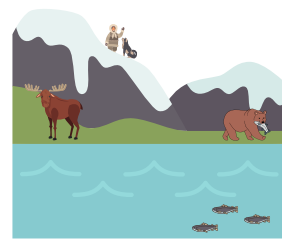


Kid's Kaleidoscope

Country of the Month

USA – State of Alaska

United States and Canada



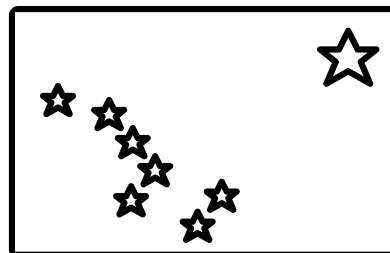
CONVERSATION CENTRAL

When did the Alaska District Church of the Nazarene begin supporting the World Evangelism Fund? _____

What happened when the Alaska District didn't reach their World Evangelism Fund goal before a District Assembly? Have you ever seen God work in an incredible way like this, providing for a need after prayer?

The Alaska District works so hard to give to the World Evangelism Fund each year. What do you think you could do to give to missions?

COLOR THE FLAG

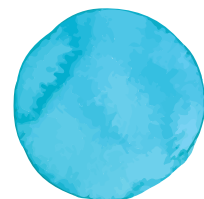
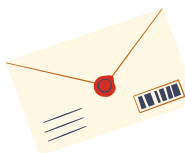


The Alaska state flag was designed by a 13-year-old Native American boy. The blue represents the sky, sea, mountain lakes, and Alaska's wildflowers. On it are eight gold stars: seven in the constellation Ursa Major (the Great Bear, or the Big Dipper) and the eighth being the North Star, standing for Alaska itself, the northernmost state.

WORLD EVANGELISM FUND

We read about the World Evangelism Fund or WEF, you have probably heard about it at church, but what it is? Open this link: <https://nvbo.nazarene.org/index.php/s/2iDPDNqeCc3LEzk> and watch a video that will help you learn more about WEF.

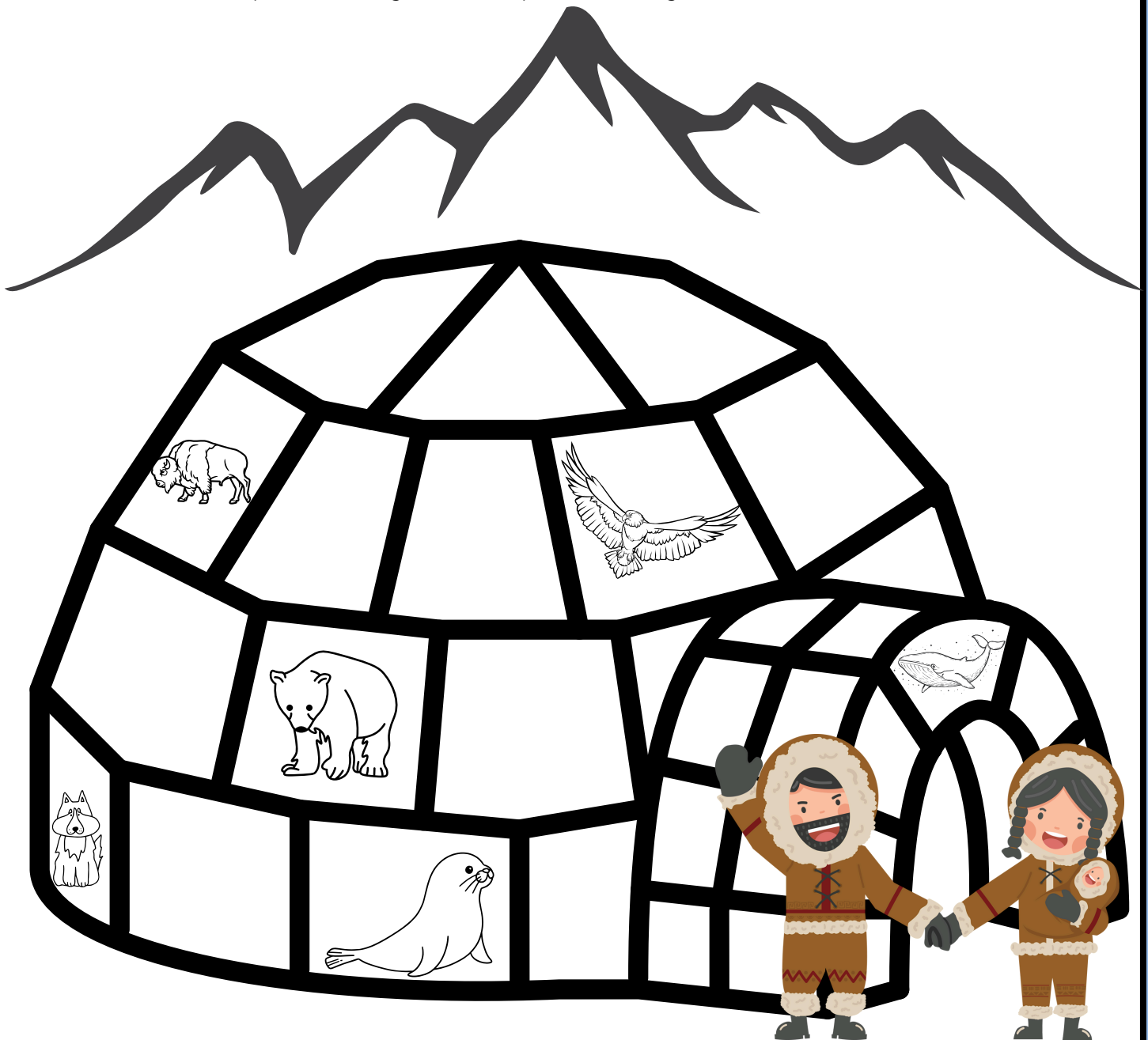
While you are watching, find the correct clues below that represent WEF and circle them. Then talk about what you learned with the people you watched the video with.



KALEIDOSCOPE PAGE

Alaska is also known as “The Last Frontier” because it is so large with many lakes, rivers, mountains and untouched nature. There are many animals that call Alaska home, some of them are below on the igloo, which is a typical type of home for the Alaskan people who live in the extreme cold. Because Alaska is so far north it is a state that has long winter days with nearly 23 hours of darkness. They also have summer days with nearly 23 hours of light. Can you imagine that many days in almost complete darkness? It could be very similar to how people might feel who don’t know Jesus. Remember, Jesus came to bring light to the darkness. In our story, we learned about how the Alaska District has been supporting the World Evangelism Fund, which supports missions around the world. That is one way to bring light into a dark world. Our activity page has an activity for you to recreate an incredible light show that happens in Alaska; the “auroras.” God is always bringing light into darkness, he created us to help him do that.

As you color the Alaskan scene below with the igloo, and animals found in Alaska, draw some things that remind you of God’s light and how you can be a light in this world of darkness.



Remember this: The person who plants a little will have a small harvest. But the person who plants a lot will have a big harvest. Each one should give, then, what he has decided in his heart to give. He should not give if it makes him sad. And he should not give if he thinks he is forced to give.

God loves the person who gives happily.

2 Corinthians 9:6–7 International Children’s Bible



Aurora Art

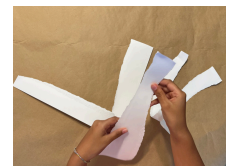


Auroras are caused by the Sun. The Sun sends out a stream of electrically charged particles called the solar wind. The solar wind travels from the Sun toward the Earth at great speed.

The Earth is a huge magnet surrounded by a magnetic field. The Earth's magnetic field forces the charged particles in the solar wind toward the planet's northern and southern polar regions. The particles move downward through the Earth's upper atmosphere. As they do, they crash into atoms and molecules of gases such as oxygen and nitrogen. These collisions cause the atoms and molecules to give off light. This light is an "aurora." An aurora's colors are determined by the different gases that give off the light. In Alaska these auroras are called the Northern Lights or Aurora Borealis. You will have the opportunity to make your own auroras on paper, just follow the directions below.

WHAT YOU NEED:

- Black or dark blue paper
- White card stock
- Colored Chalk
- Animals on following page
- White paint and paintbrush
- Scissors
- Glue



INSTRUCTIONS:

1. Take the white cardstock and tear it in 3 or 4 different ways horizontally.
2. Then, use the colored chalk to add a thick layer of color to the top of the tear.
3. Place that paper with the chalk facing up on top of the dark colored paper as if it were mountains.
4. Rub in an upward motion to spread the chalk onto the black paper.
5. Repeat this process with the different torn pieces of paper and different colors of chalk. You will see the Auroras come to life on your paper.
6. At the bottom add a thick white line to make the snowy ground.
7. Then cut out some of the animals and trees on the following page and glue them onto your Aurora art to make an Alaskan night scene during the Aurora Borealis.
8. You can then take some white paint and using the paintbrush flick small white dots on your art to make it look like it is snowing.

